



# INDOFINE Chemical Company, Inc.

121 Stryker Lane, Bldg. 30, Suite 1 • Hillsborough, NJ 08844 • U.S.A.

Phone: (908) 359-6778 • FAX: (908) 359-1179

website: [www.indofinechemical.com](http://www.indofinechemical.com)

e-mail: [chemical@indofinechemical.com](mailto:chemical@indofinechemical.com)

## CERTIFICATE OF ANALYSIS

Catalog Number: 19-070

Product Name: 6,8-DICHLORO-3(4'-METHOXYPHENYL)-4-PHENYLCOUMARIN

Lot Number: 99015

Chemical Formula: C<sub>22</sub>H<sub>14</sub>Cl<sub>2</sub>O<sub>3</sub>

Molecular Weight: 397.26

Melting Point: 186-187°C

Appearance: Off white powder

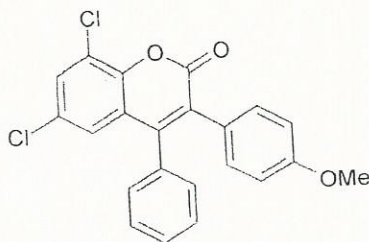
Solubility: Soluble in Chloroform

TLC: n-Hexane : Ethyl acetate (7:3)

NMR Spectrum: Enclosed (Conform to the structure)

Storage: Cool dry place

Purity (HPLC): 99.73%





# INDOFINE Chemical Company, Inc.

121 Stryker Lane, Bldg. 30, Suite 1 • Hillsborough, NJ 08844 • U.S.A.

Phone: (908) 359-6778 • FAX: (908) 359-1179

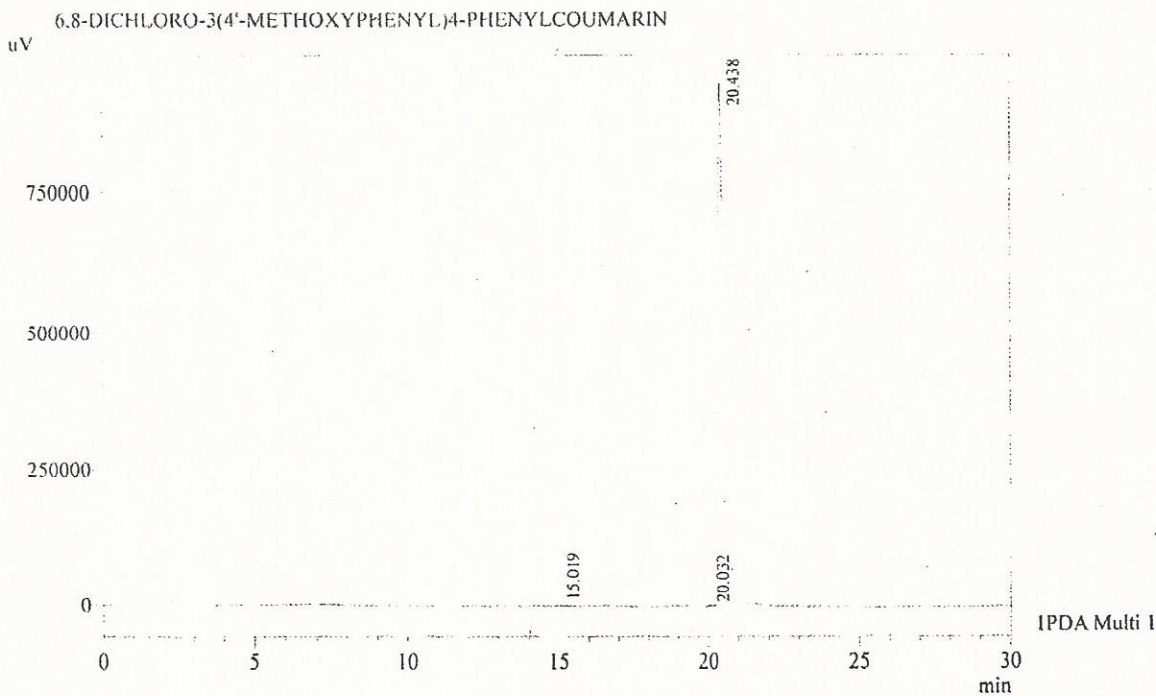
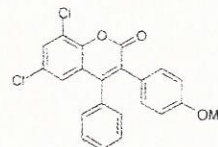
website: [www.indofinechemical.com](http://www.indofinechemical.com)

e-mail: [chemical@indofinechemical.com](mailto:chemical@indofinechemical.com)

## HPLC ANALYSIS

Acquired by : Admin  
 Sample Name : 6,8-DICHLORO-3(4'-METHOXYPHENYL)4-PHENYLCOUMARIN  
 Sample ID : Lot No:99015  
 Injection Volume : 1 uL  
 Data Filename : 170916B.lcd  
 Method Filename : Linear Gradient.M.lcm  
 Report Filename : Default.lcr

Catalog No.: 19-070  
 Product Name: 6,8-Dichloro-3(4'-Methoxyphenyl)-4-phenylcoumarin  
 Lot No.: 99015



I PDA Multi 1 / 254nm 4nm

PeakTable

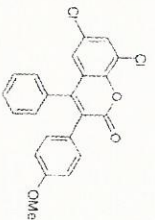
PDA Ch1 254nm 4nm

Peak#	Name	Ret. Time	Area	Area %	Relative Retention Time
1	RT:15.019	15.019	38085	0.26	0.00
2	RT:20.032	20.032	1718	0.01	0.00
3	RT:20.438	20.438	14582439	99.73	0.00
Total			14622242	100.00	



**INDOFINE Chemical Company, Inc.**  
 121 STRYKER LANE  
 BLDG. 30, SUITE 1  
 HILLSBOROUGH, NJ 08844

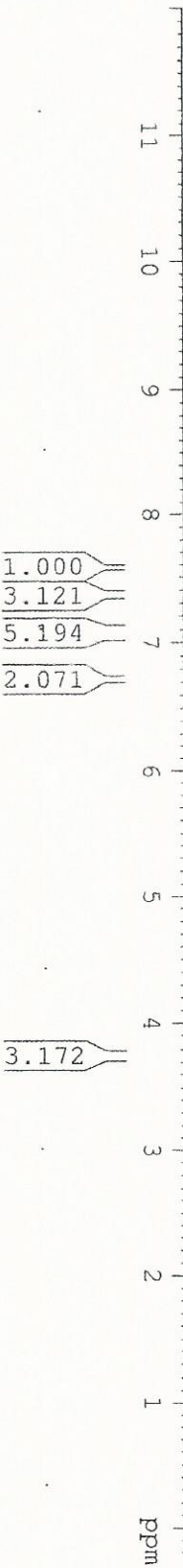
Catalog No.: 19-070  
 Product Name: 6,8-Dichloro-3-(4'-Methoxyphenyl)-4-phenylcoumarin  
 Lot No.: 99015



SOLVENT CDCl<sub>3</sub>  
 NS 9  
 DS 10245.301 HZ  
 SMH 0.242277 HZ  
 FIDRES 2.0638020 sec  
 AQ 57  
 RG 48.600 usec  
 DW 5.00 usec  
 DE 298.2 K  
 TE 1.50000000 sec  
 DI 1  
 TD0 1

CHANNEL: F1  
 NUC1 1H  
 P1 7.50 usec  
 PL 2.60 dB  
 PL1W 6.62584448 W  
 SFO1 400.3344674 MHz  
 SI 32768  
 SE 400.3300131 MHz  
 MDW EM  
 SSB 9  
 LB 0.30 HZ  
 GB 0  
 PC 1.00

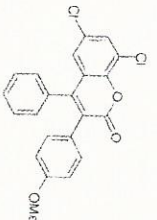
1H CDCl<sub>3</sub>  
 600 MHz





**INDOFINE Chemical Company, Inc.**  
 121 STRYKER LANE  
 BLDG. 30, SUITE 1  
 HILLSBOROUGH, NJ 08844

Catalog No.: 19-070  
 Product Name: 6,8-Dichloro-3-(4-Methoxyphenyl)-4-phenylcoumarin  
 Lot No.: 99015



SOLVENT CDCl3  
 NS 8  
 DS 0  
 SMH 10245.901 Hz  
 FIDRES 0.242277 Hz  
 AQ 2.0638020 sec  
 RG 57  
 DW 48.800 usec  
 DE 6.00 usec  
 TE 298.2 K  
 D1 1.50000900 sec  
 TD0 1

CHANNEL F1  
 NSC1 1H  
 P1 7.50 usec  
 PL1 2.50 dB  
 PL1M 6.62584448 W  
 SFO1 600.3394678 MHz  
 S1 22768  
 SE 600.3390131 MHz  
 WDW EM  
 SSB 0  
 LB 0.30 Hz  
 GB 0  
 PC 1.00

